

# Bilingual teaching strategies: ASL and English for Academic purposes

Teaching presentations and essay  
writing skills

# Discourse

- Classroom presentation
- Written essays
- The expectations are culturally determined and depend on the language used (Kaplan)  
FRENCH– DIGRESSION  
KOREAN--INDIRECT

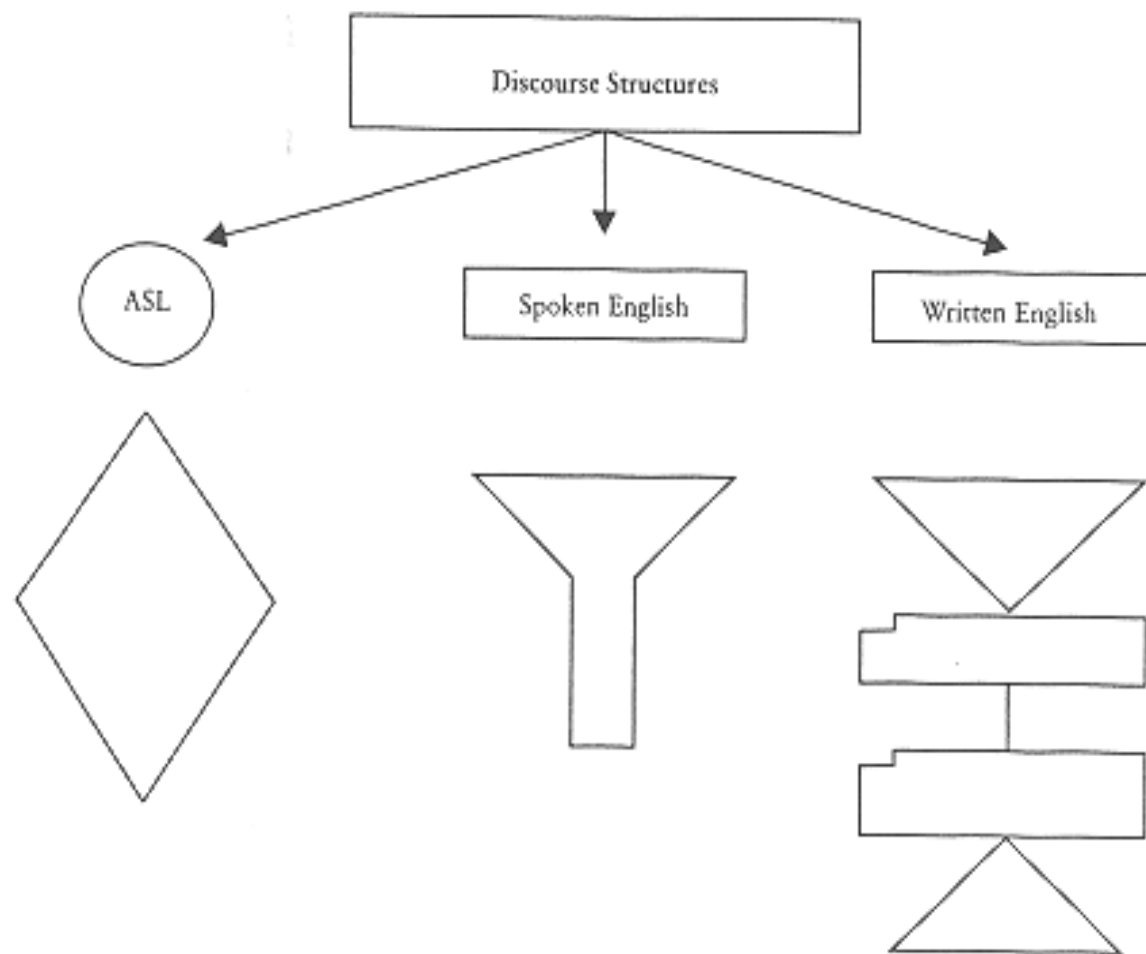


FIGURE 1. *Discourse Structures. The discourse structures first appeared in three different sources. The ASL structure first appeared in Bienvenu and Colonomos (1989), the spoken English structure in Neuroth-Gimbrone (1995), and the written English structure in Reid (1998).*

# Linguistic interdependence model

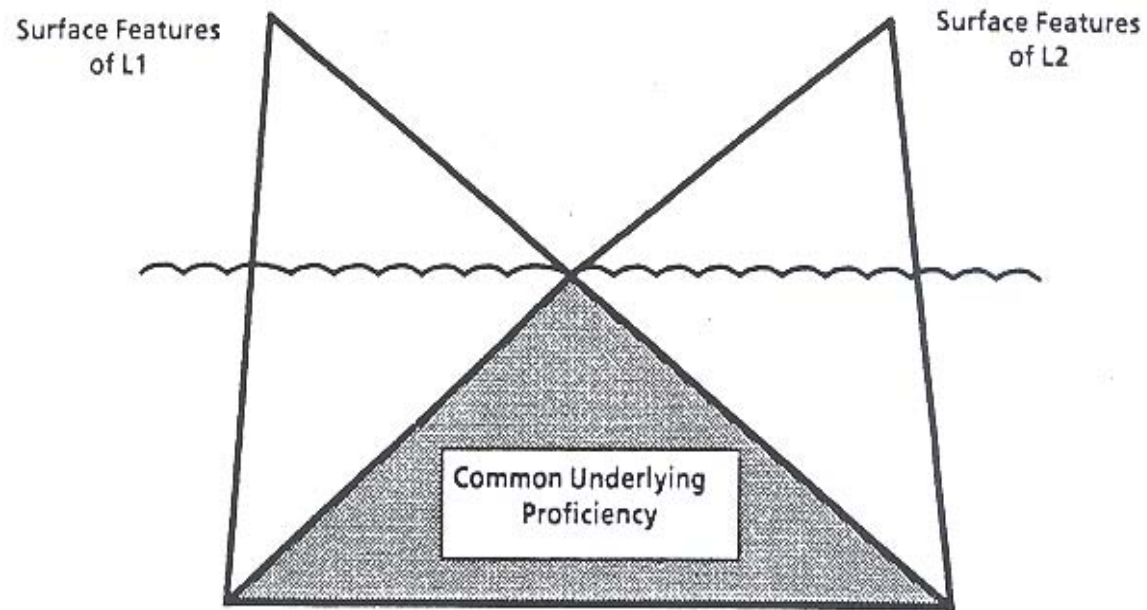
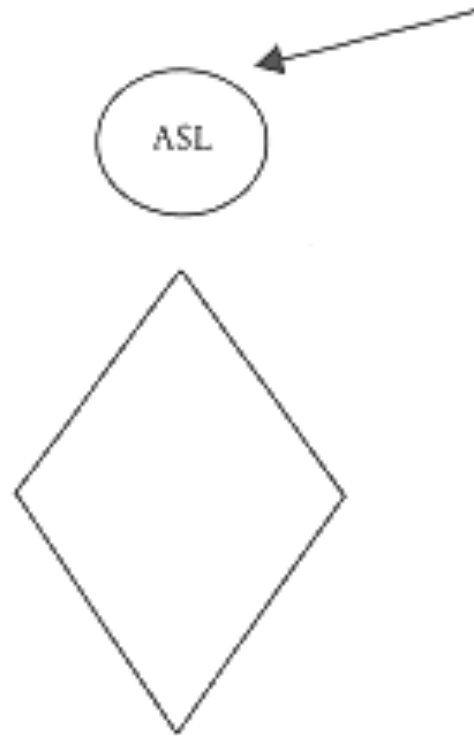
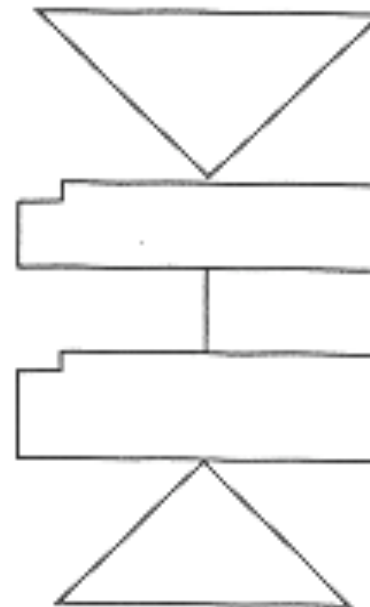
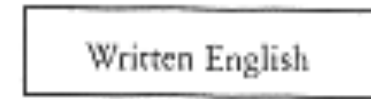


Figure 2. THE LINGUISTIC INTERDEPENDENCE MODEL

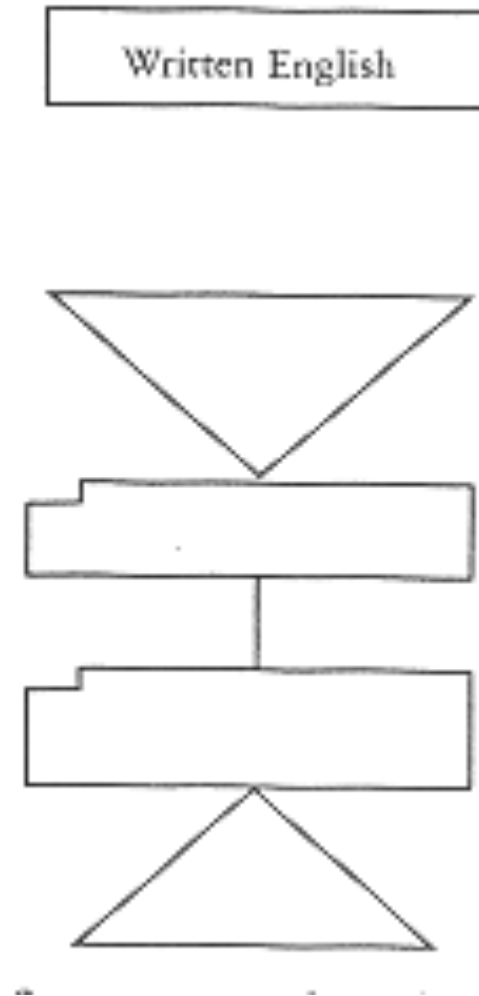
Strongest language : video examples,  
analysis, own drafts, feedback, final



# Transference of information in appropriate form: notation



# Development of written drafts- contextualization of grammar/voc



# Introductions/conclusions

- Strategies and examples
- Linking vocabulary



# Sentence level/vocabulary choices

- COUNTRY PHILIPPINES PT-there TRAVEL COOL  
WHY PEOPLE FRIENDLY TRUE-BUSINESS
- The Philippines is an excellent vacation destination because of the generous hospitality of the people who live there.

# Vocabulary (degree)

- Nice looking
- Pretty
- Really pretty
- Beautiful
- Gorgeous
- Dazzling

# Bilingual Discourse

- Allows students to create presentations using most comfortable language for content
- Analyzes discourse expectations across both languages and cultures
- Allows students to focus on linguistic features of the written language in context